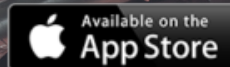


# AT-200

THE SMART APP-BASED  
SHAFT ALIGNMENT SOLUTION



**acoem**  
CREATING ENVIRONMENTS OF POSSIBILITY



## AT-200

The market's superior  
Precision shaft alignment  
Solution.

The AT-200 shaft alignment solution is the result of almost 40 years of shaft alignment expertise and innovation, leveraging the latest technology to enhance your user experience.

Acoem takes alignment into the world of Industry 4.0 with the AT-200. Integrated Apps, patented technology and easy connectivity makes the AT-200 a superior app-based alignment tool.

Faster

More Accurate

Easy To Use

Scalable

Part of Acoem's Augmented Mechanics Ecosystem



## A complete shaft alignment solution

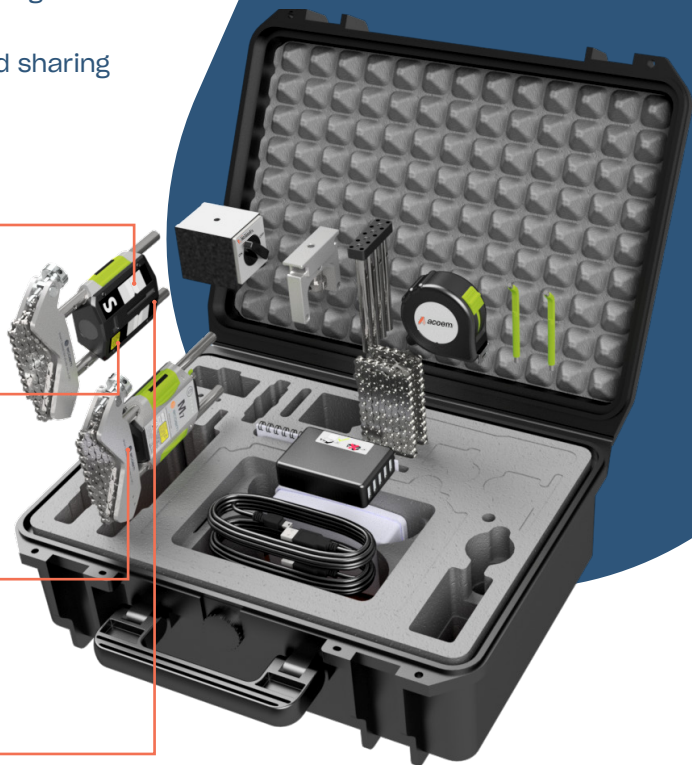
- Two smart wireless sensors with their accessories
- Task oriented Horizontal & Vertical shaft alignment mobile apps
- Optional Acoem Cloud report storage and sharing capabilities with secure communication.

IP65-certified sensor design that can withstand harsh environments

Digital sensor with 30 mm detector and line laser eliminate rough alignment and shorten setup time

Thin sensors suitable for machines with limited space

Integrated Bluetooth for wireless communication between display unit and smart sensors



## Precision alignment matters

Even the smallest angle of misalignment can drastically reduce the lifespan of rotating machinery by more than 50%. This can be avoided by proactively undertaking precision alignment as part of your maintenance program. Proper alignment practices not only help reduce downtime but also improve productivity.

- Avoid unexpected failures which can cause complete process shutdowns or safety incidents
- Eliminate the root cause of 50% of bearing failures
- Extend the lifetime of your assets and reduce the total costs of ownership
- Reduce energy consumption by up to 10%.



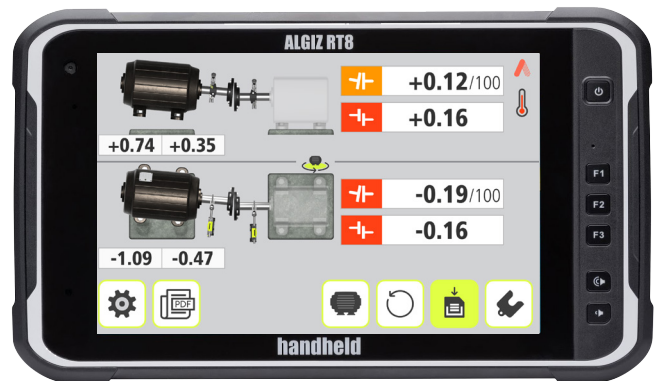
*The high precision of digital laser technology not only saves you time and money on your shaft alignment, but it also removes human error, extends the life of your machinery and enhances operational performance.”*

## GuideU™

### Intuitive interface

GuideU™ is the next generation alignment 3D graphical user interface – our patented, customizable, icon-driven and color-coded display system makes measuring, aligning, documenting and reporting on each job simple.

GuideU™ delivers precise measurement and correction values by minimizing the risk of human errors, guiding the operator through the process in using visual, logical and easy-to-follow steps.



## TrueLive™

### Game changer for shaft alignment

An industry-first technology, it features two smart sensors with laser beams and inclinometers that monitor both shaft positions at the same time.

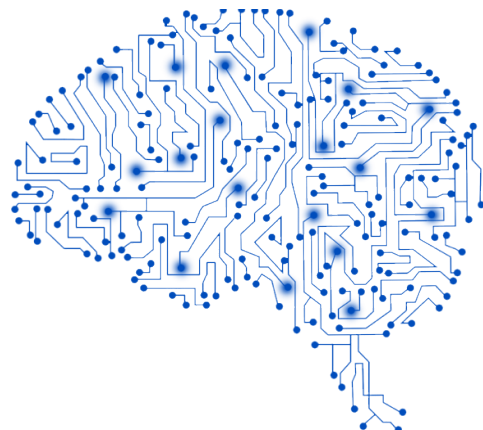
Even if you move the machine's position out of detector range or interrupt the laser beam, the smart sensors will resume with an updated machine position and always deliver live values. TrueLive functionality helps you save time when aligning your machinery.



## Alignment intelligence

### Superior measurement performance

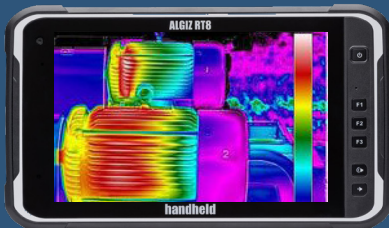
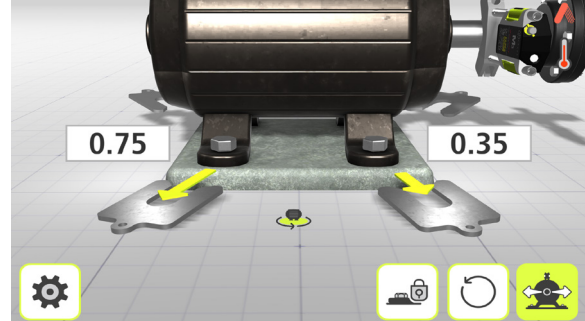
AT-200 sensors use superior digital CCD technology, giving you unrivalled digital filtering capabilities and making the sensors highly tolerant of detrimental external factors, such as vibration and ambient light.



## VertiZontal™

### Reduce alignment time

VertiZontal™ adaptive user interface automatically indicates exactly how much you need to adjust your misaligned machine by adding or removing shims to the machine's feet. This removes the need to remeasure between the vertical and the horizontal phases to correct the horizontal misalignment. This industry-first function saves time and ensures accuracy with every measurement.



*\*Available on Android devices*

### Add the power of thermography

As part of Acoem's commitment to continually make the process of aligning your critical machinery easier, we have integrated the option to easily demonstrate the efficiency of your actions.



### Simplify your reporting process



The Acoem shaft alignment apps' PDF report function provides fast and efficient on-site reporting functionality that converts saved measurement reports into PDF files, that can be shared instantly from the mobile device.



### Acoem cloud - share secure data



You have the option to push your alignment data to the Acoem Cloud to provide instant access to reports and synchronise machine operations with relevant team members.

# Augmented mechanics ecosystem

## The ultimate solution for proactive & predictive maintenance

The Horizontal and Vertical shaft alignment apps are part of Acoem's Augmented Mechanics Ecosystem, the first truly flexible and scalable solution for combining different technologies on the same mobile platform to deliver reliable and precise proactive and predictive maintenance for industrial machinery.

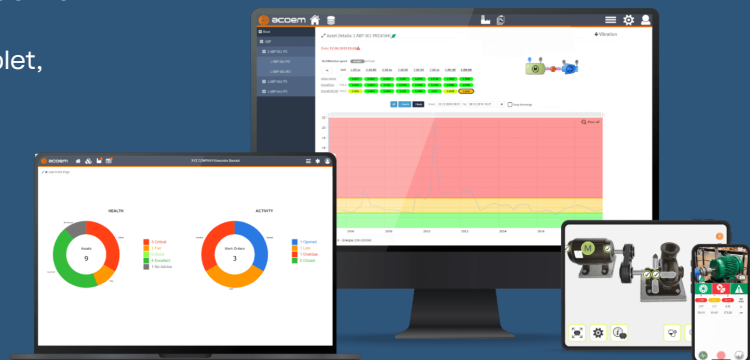
Designed to allow you to continually add to or upgrade as new technologies become available, or as your specific needs change over time, the Ecosystem is made up of a combination of mobile applications, connected wireless sensors, a combination of mobile application and connected wireless sensors.

In addition to the horizontal and vertical shaft alignment apps, the Ecosystem currently features additional applications:



## A new environment of possibility

- Total control over your machinery's proactive & predictive maintenance
- Accessible via any enabled device – tablet, smartphone, laptop etc.
- Upgradable, customizable & scalable based on your needs
- Links vibration & alignment data to optimize maintenance process
- Share information instantaneously among your teams
- Benefit of insightful product - training videos & Acoem technical support





## Future-proof your investment

The Augmented Mechanics Ecosystem is a huge leap forward in machinery reliability through enhanced connectivity, integrated technology, the ability to easily share data and the automatic report generation function that is as simple as sending an email directly from your tablet.

It is also the only system on the market that grows with your requirements. Always

upgradable, it is an assurance that your investment will be protected and as technology evolves, your system will remain compatible, easy to use and up to date.

So much more than an alignment and monitoring tool – the Augmented Mechanics Ecosystem represents the next generation of holistic maintenance solutions.

## About Acoem

At Acoem, we create environments of possibility — helping organisations find the right balance between progress and preservation — safeguarding businesses and assets, and maximising opportunities while conserving the planet's resources. We deliver unrivalled, interoperable AI-powered sensors and ecosystems that empower our customers to make enlightened decisions based on accurate information.

Together with 150 distributors, our 800+ employees work across 27 offices, 5 manufacturing facilities and 3 R&D centres in 11 countries, to provide trusted, holistic data solutions for customers worldwide.

**Acoem links possibilities with protection.**

For more information visit [acoem.com](https://acoem.com)



**B & K s.r.o.**  
**Palisády 20, 811 06 Bratislava**  
**Slovak Republic**  
**02/ 544 307 01**  
**[bk@bruel.sk](mailto:bk@bruel.sk), [www.bruel.sk](http://www.bruel.sk)**